



**REGIONAL SPECIALISED METEOROLOGICAL CENTRE-TROPICAL CYCLONES, NEW DELHI
SPECIAL TROPICAL WEATHER OUTLOOK**

DEMS-RSMC TROPICAL CYCLONES NEW DELHI DATED 15.07.2025

SPECIAL TROPICAL WEATHER OUTLOOK FOR NORTH INDIAN OCEAN (THE BAY OF BENGAL AND THE ARABIAN SEA) VALID FOR NEXT 168 HOURS ISSUED AT 2100 UTC OF 15.07.2025 BASED ON 1800 UTC OF 15.07.2025.

SUB: (A) WELL MARKED LOW PRESSURE AREA OVER SOUTH BIHAR AND ADJOINING JHARKHAND

(B) DEPRESSION OVER NORTHWEST RAJASTHAN

(A) WELL MARKED LOW PRESSURE AREA OVER SOUTH BIHAR AND ADJOINING JHARKHAND

THE WELL MARKED LOW PRESSURE AREA OVER NORTH JHARKHAND AND ADJOINING SOUTH BIHAR MOVED WEST-NORTHWESTWARDS AND LAY OVER SOUTH BIHAR AND ADJOINING JHARKHAND AT 1800 UTC OF TODAY, THE 15TH JULY 2025.

IT IS LIKELY TO MOVE WEST-NORTHWESTWARDS ACROSS SOUTH BIHAR TOWARDS EAST UTTAR PRADESH DURING NEXT 24 HOURS. HOWEVER, THE SYSTEM IS UNDER CONTINUOUS MONITORING FOR POSSIBLE RE-INTENSIFICATION.

AS PER INSAT 3DS IMAGERY, AT 1800 UTC OF 15TH JULY 2025 SCATTERED TO BROKEN LOW/MED CLOUDS WITH EMBEDDED INTENSE TO VERY INTENSE CONVECTION OVER EAST UTTAR PRADESH EAST MADHYA PRADESH VIDARBHA SOUTH BIHAR JHARKHAND CHHATTISGARH ODISHA (MINIMUM CTT MINUS 70-90 DEG CEL) AND MODERATE TO INTENSE CONVECTION OVER NORTH BIHAR GANGETIC WEST BENGAL (MINIMUM CTT MINUS 50-70 DEG CEL).

(B) DEPRESSION OVER NORTHWEST RAJASTHAN

THE DEPRESSION OVER NORTHWEST RAJASTHAN MOVED SLOWLY NORTH-NORTHWESTWARDS WITH A SPEED OF 7 KMPH DURING PAST 6 HOURS AND LAY CENTRED AT 1800 HRS UTC OF TODAY, THE 15TH JULY, 2025 OVER THE SAME REGION, NEAR LATITUDE 29.3°N AND LONGITUDE 73.5°E, ABOUT 40 KM NORTHEAST OF ANUPGARH (42122), 80 KM SOUTH-SOUTHWEST OF GANGANAGAR (42123) AND 140 KM SOUTHWEST OF BHATINDA (42097).

IT IS LIKELY TO CONTINUE TO MOVE NORTH-NORTHWESTWARDS ACROSS NORTHWEST RAJASTHAN AND WEAKEN INTO A WELL MARKED LOW PRESSURE AREA DURING NEXT 12 HOURS.

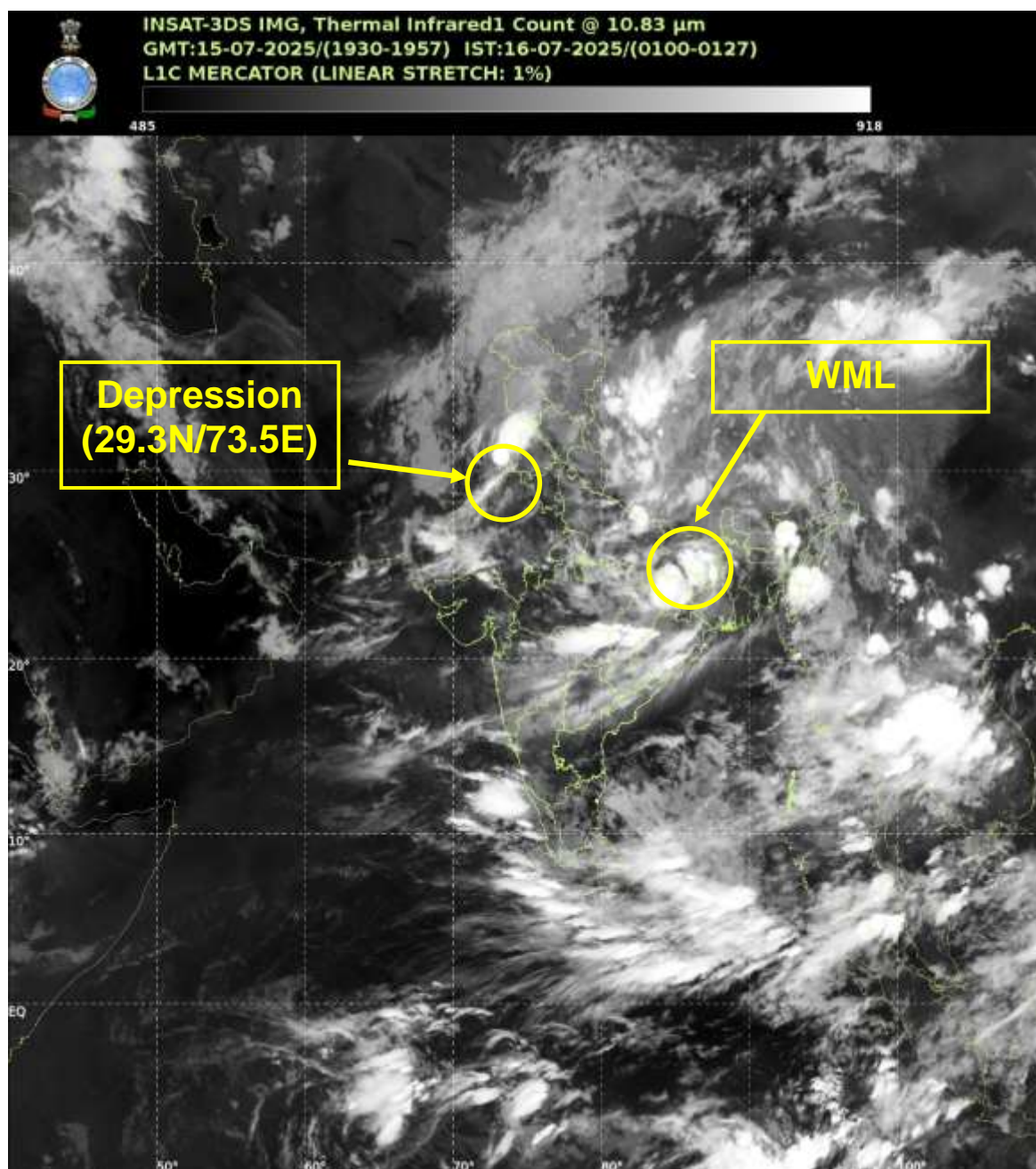
AS PER INSAT 3DR IMAGERY, AT 1800 UTC OF 15th JULY 2025 SCATTERED TO BROKEN LOW/MEDIUM CLOUDS WITH EMBEDDED INTENSE TO VERY INTENSE CONVECTION OVER WEST RAJASTHAN NORTH PUNJAB (MINIMUM CTT MINUS 70-90 DEG CEL) AND MODERATE TO INTENSE CONVECTION OVER SOUTH PUNJAB HARYANA EAST RAJASTHAN (MINIMUM CTT MINUS 50-70 DEG CEL).

WARNINGS:

WIND WARNING:

- SQUALLY WIND SPEED REACHING 35-45 KMPH GUSTING TO 55 KMPH IS LIKELY TO PREVAIL OVER NORTH RAJASTHAN AND ADJOINING HARYANA & PUNJAB FOR NEXT 12 HOURS, AND DECREASE THEREAFTER.
- SQUALLY WIND SPEED REACHING 30-40 KMPH GUSTING TO 50 KMPH IS LIKELY OVER BIHAR, JHARKHAND, NORTH CHHATTISGARH, AND ADJOINING EAST UTTAR PRADESH DURING NEXT 24 HOURS

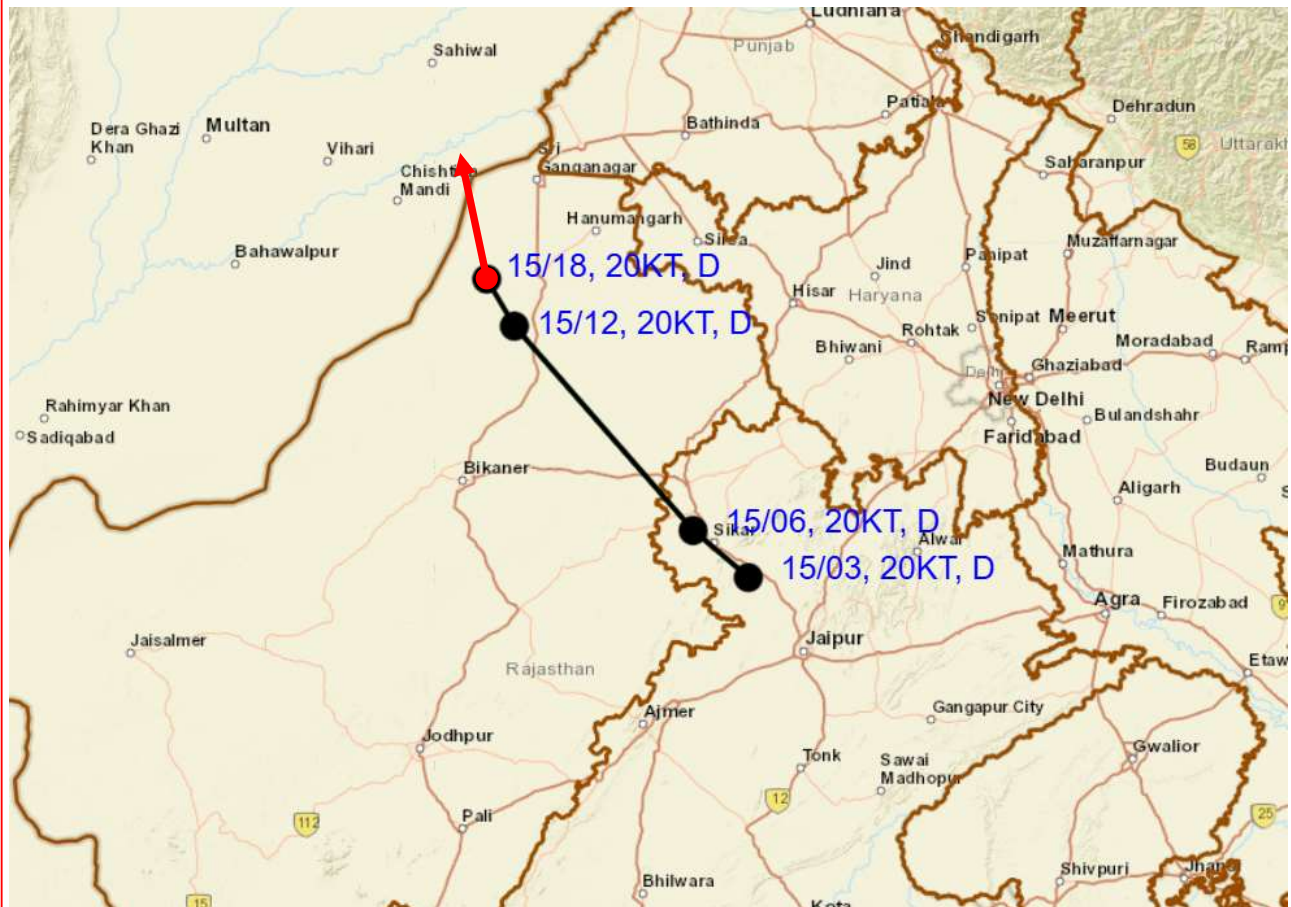
(SUPRIT KUMAR)
SCIENTIST E, NEW DELHI



WML – Well Marked Low Pressure Area



OBSERVED AND FORECAST TRACK OF DEPRESSION OVER NORTHWEST RAJASTHAN AT 1800 UTC (2330 HRS. IST) OF 15th JULY 2025



D : DEPRESSION (17-27 KT)
DD : DEEP DEPRESSION (28-33 KT)
CS : CYCLONIC STORM (34-47 KT)

DATE/TIME IN UTC
IST=UTC + 0530
L: LOW PRESSURE AREA
WML: WELL MARKED LOW PRESSURE AREA
D: DEPRESSION (17-27 KT)
DD: DEEP DEPRESSION (28-33 KT)
CS: CYCLONIC STORM (34-47 KT)
SCS: SEVERE CYCLONIC STORM (48-63KT)
VSCS: VERY SEVERE CYCLONIC STORM (64-89 KT)
ESCS: EXTREMELY SEVERE CYCLONIC STORM (90-119 KT)
SuCS: SUPER CYCLONIC STORM (≥ 120 KT)

● LESS THAN 34 KT
● 34-47 KT
● ≥ 48 KT
— OBSERVED TRACK
— FORECAST TRACK
▲ CONE OF UNCERTAINTY

Fishermen Warning Graphics

